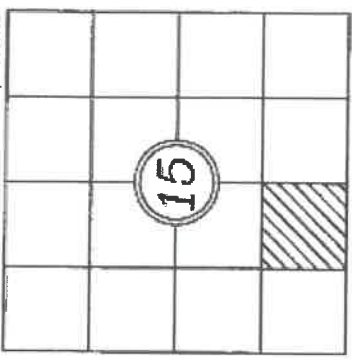
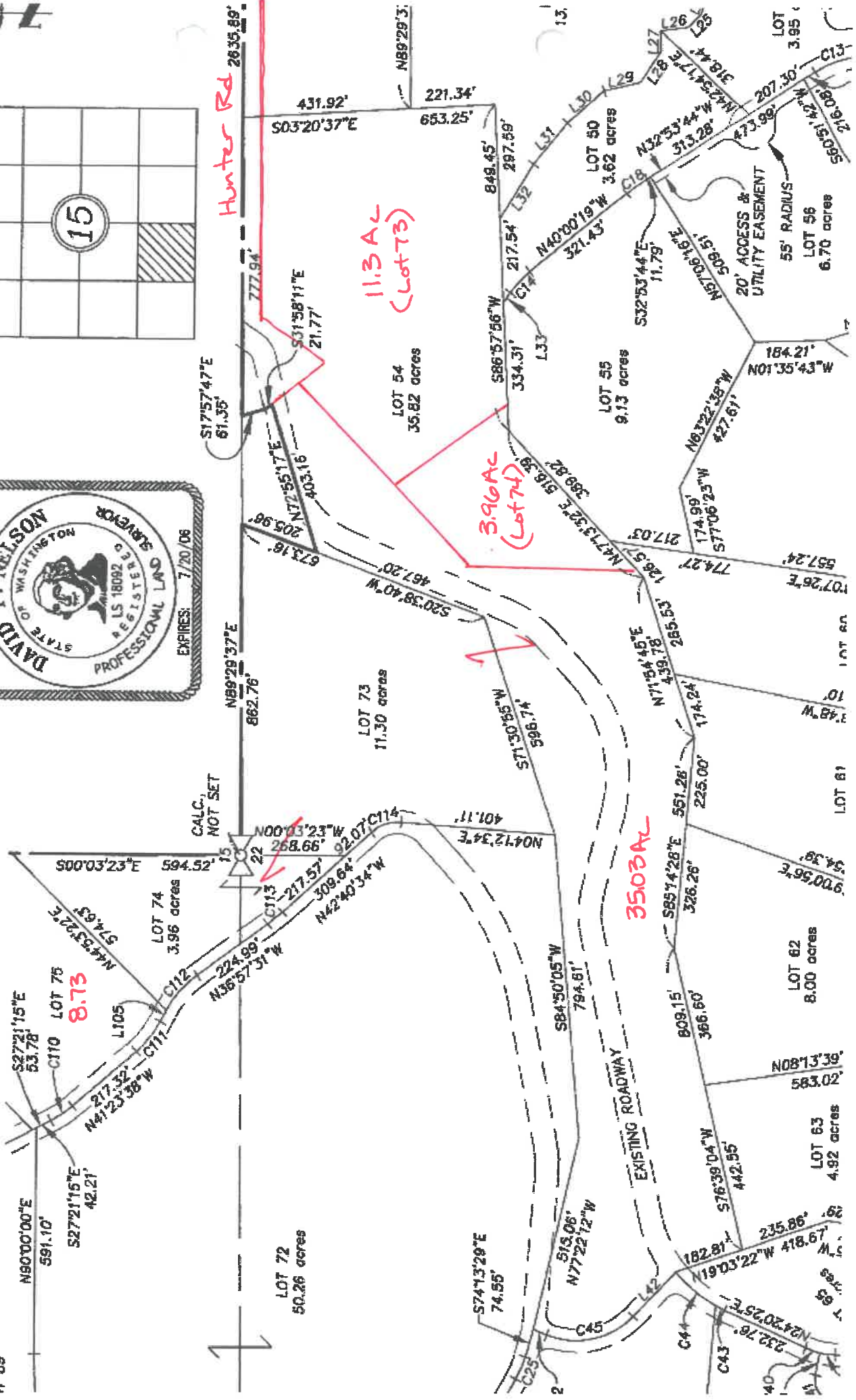


Proposed

SECTION 15, T. 10N., R. 11E., W. 1M.



Hunter Rd 2635.89'



11.3 AC (Lot 73)

3.96 AC (Lot 74)

35.03 AC

8.73

CALC. NOT SET

EXISTING ROADWAY

20' ACCESS & UTILITY EASEMENT

55' RADIUS

LOT 96 6.70 acres

LOT 95 3.95 acres

LOT 94 3.95 acres

LOT 93 3.95 acres

LOT 92 3.95 acres

LOT 91 3.95 acres

LOT 90 3.95 acres

LOT 89 3.95 acres

LOT 88 3.95 acres

HUNTER RD.

PUMP SHED

ESMNT 101

LOAFING SHED

EQUIPMENT SHED

FOUND P/C

SEPTIC

EQUIPMENT SHED

TANEUM DITCH

HOUSE

SEPTIC

GARAGE

POND

40'

EXISTING ROAD

HOUSE

172,498.04 sq.ft.  
3.96 acres

492,228.80 sq.ft.  
11.30 acres



500 ft

Google Earth